

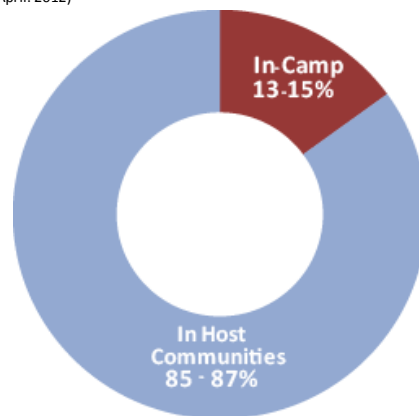
Onset of emergency: 2009  
 Date of Dashboard revision: 30<sup>th</sup> April 2012

## Situation Overview

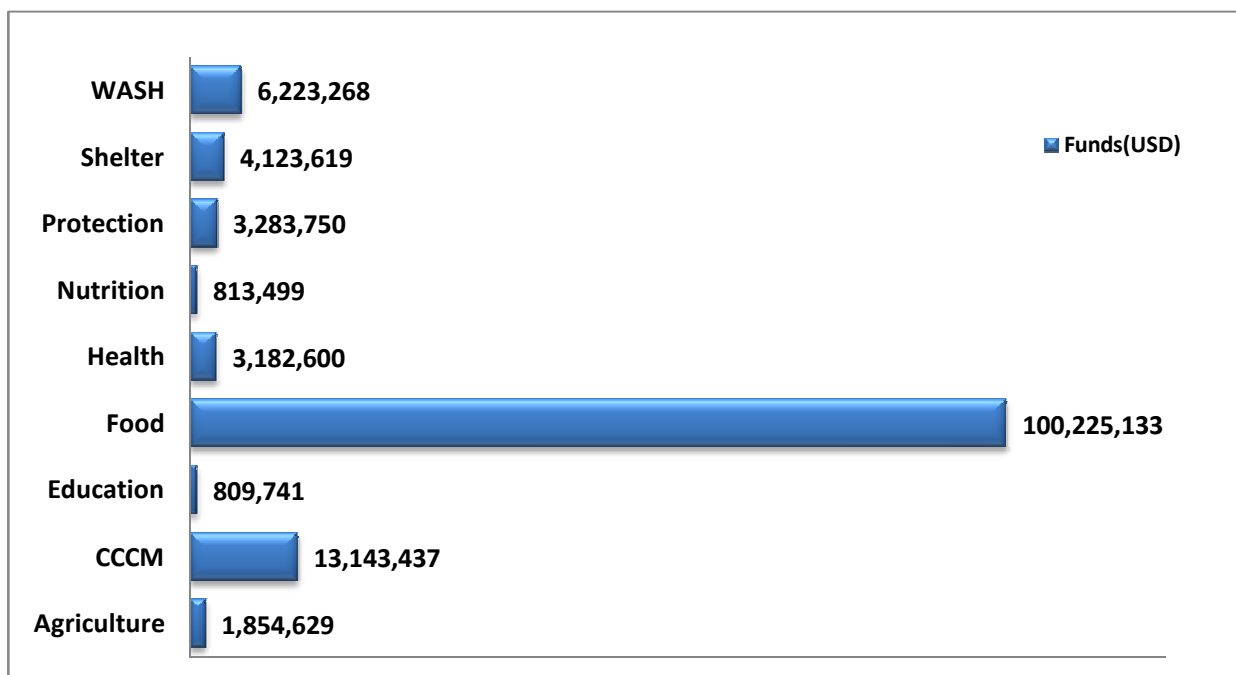
- KP/FATA is characterized by phases of displacement in response to security operation or sectarian violence in FATA agencies and subsequent returns when calm is restored, during which populations struggle to resume normal life.
- Since January 2012, over 200,000 people were displaced from Khyber agency, with over 6,000 residing in Jalozai, the rest with host families
- Overall IDP population in KP FATA is approximately 689,000 people. (UNHCR, 28<sup>th</sup> April, 2012)

## People in Need of Response

Total IDP Families: 148,593  
 Estimated people in need of humanitarian assistance: 689,007  
 (Source: UNHCR, 28 April, 2012)



## Humanitarian Operational Plan Proposed Funding Status of KP/FATA, April 2012



## HCT Strategic Priorities

The Humanitarian Country Team has identified two broad beneficiary groups that must continue to be prioritized: IDPs, on and off-camp, in KP and FATA, and returnees and “stayees” (people who were never displaced) in FATA. Groups in ‘transition’, either as they become IDPs or return to ‘normal life’ in their areas of origin in FATA or elsewhere, are particularly vulnerable and require significant support from the humanitarian community.

## Gap Analysis / Priority Areas

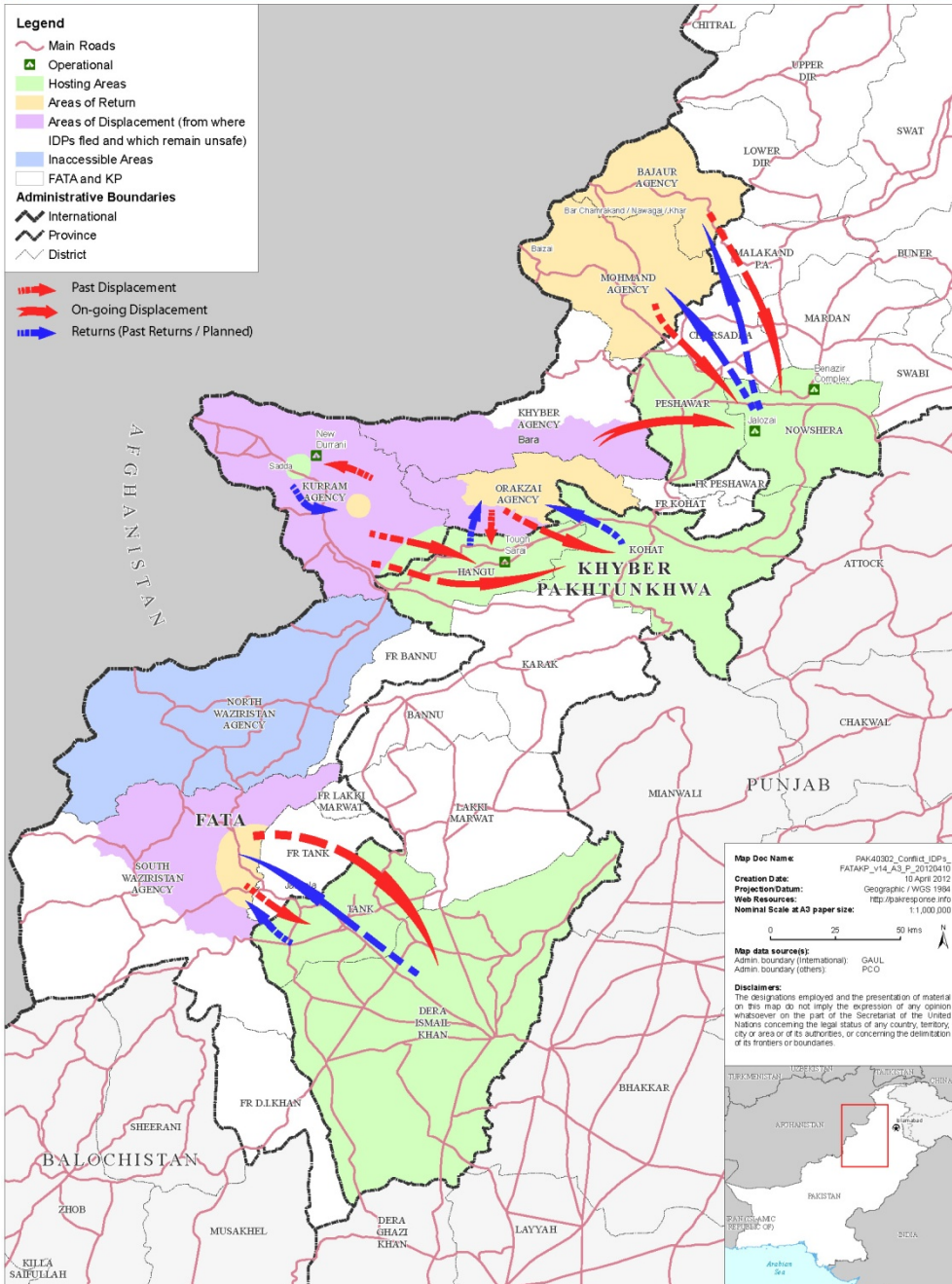
1. No formal plan or appeal in place for complex emergency in KP/FATA. Bilateral funding amounts to some US\$173 million .  
 (source: FTS)
2. While populations in camps are assisted with humanitarian aid, needs of other IDP groups, in host families and returnees need to be met
3. Relief assistance for 147,000 IDP families plus a mix of relief and Early Recovery assistance for 26,277 families during ‘transition’ from IDP status back to ‘normal life’.
4. Early recovery activities for the families returning to Mohmand, Bajaur, south Waziristan and Kurram agencies.

## Key Reference Data

	Current Situation	Pre-Floods
Displaced	8.1m (source WFP)	1m
Ref. & Asy. Seekers	1.76m	1.76m
Under 5 Mortality	N/A	90/1,000 (2010)
(GAM ( u-5)	N/A	13% (2009)
GDP per capita (PPP)	N/A	US\$1,013 (2008)
(HDI)	141 of 182	

# Humanitarian dashboard

## PAKISTAN: KP and FATA - Areas of Displacement, Hosting and Return



# Pakistan: Complex Emergency

## PAKISTAN: KP and FATA - Areas Covered by Humanitarian Operations Plan and Early Recovery Assistance Framework 2012

